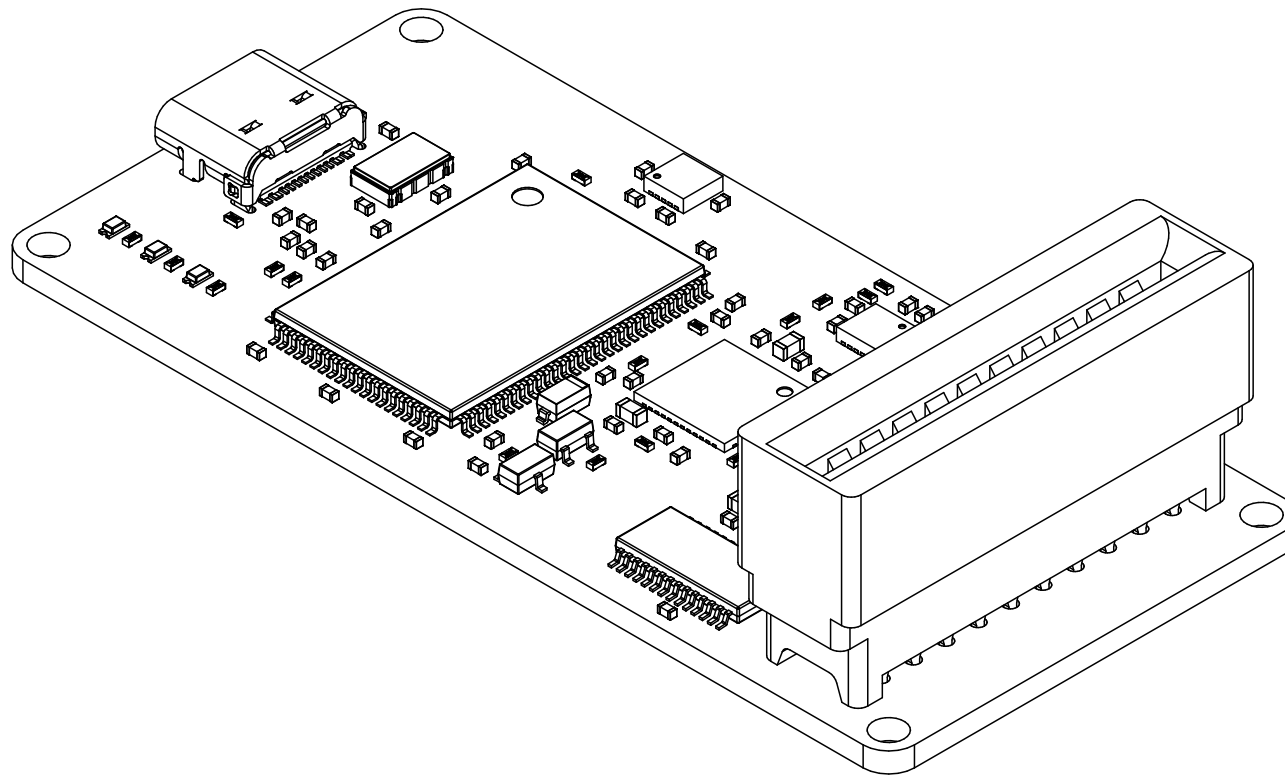
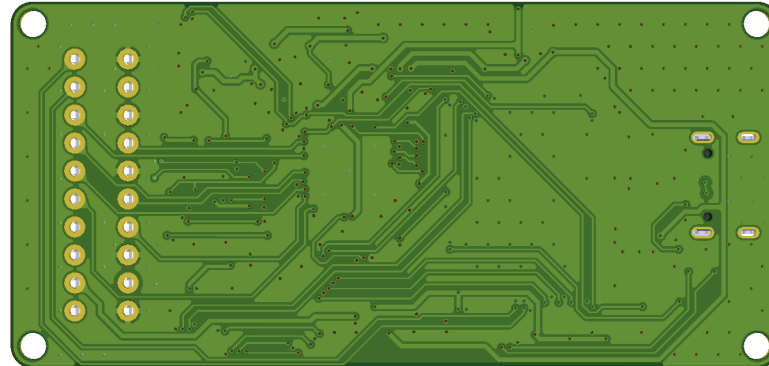
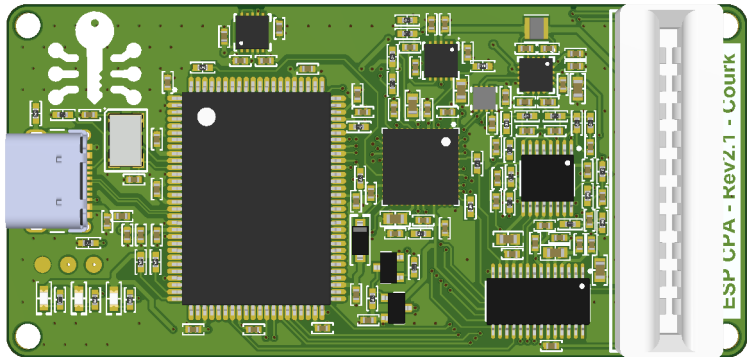
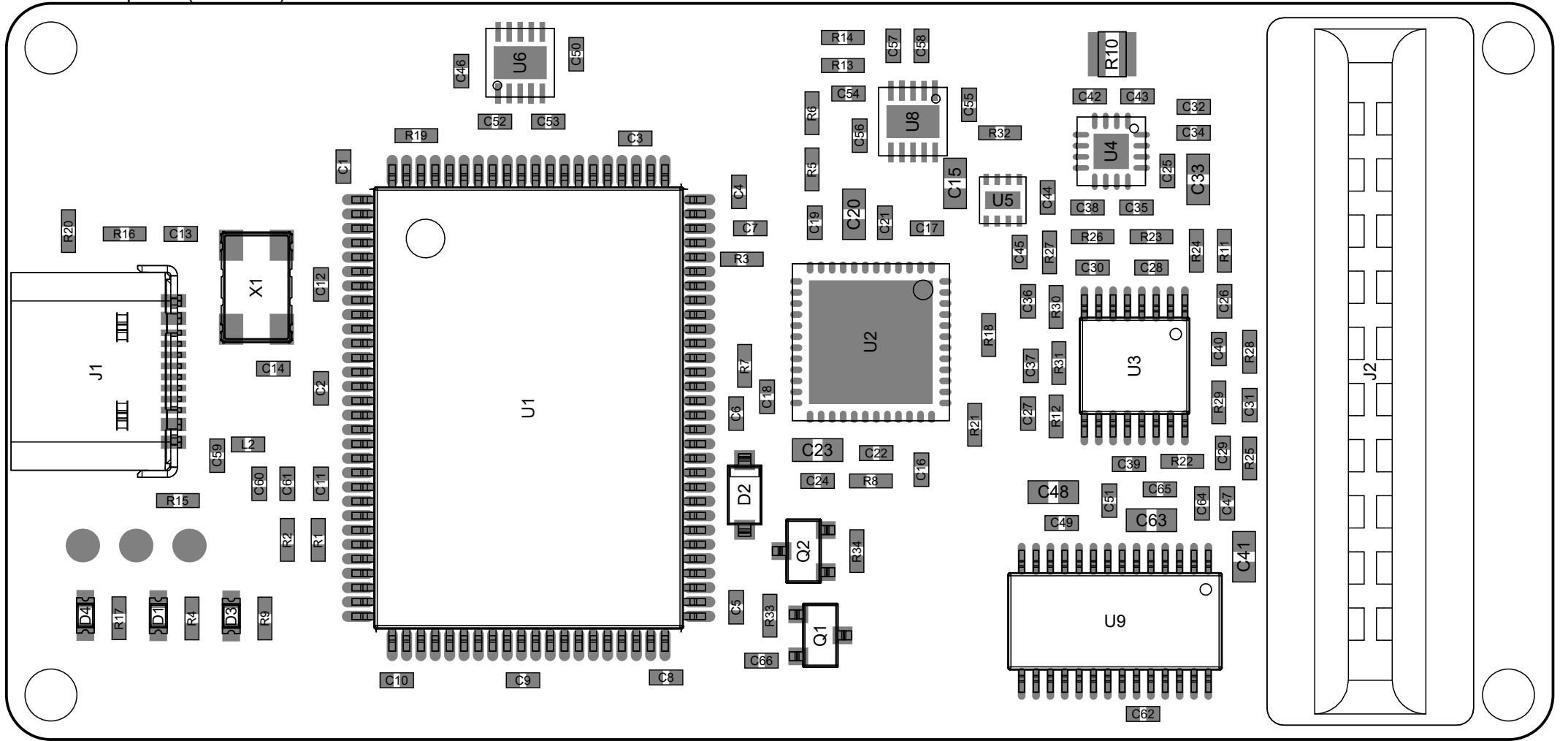


# ESP\_CPA (2.1)



<b>Project</b>	ESP_CPA
<b>Revision</b>	2.1
<b>Date</b>	16/12/2023
Sheet 1 out of 6	

View from Top side (Scale 4:1)



<b>Project</b>	ESP_CPA
<b>Revision</b>	2.1
<b>Date</b>	16/12/2023

Sheet 2 out of 6

 **courk.cc**

CC BY SA This work is licensed under a Creative Commons Attribution-ShareAlike 4.0 International License.

Bill Of Materials

Line #	Designator	Quantity	Footprint	Tolerance	Value	Manufacturer	Material	Part Name
1	C1, C2, C3, C4, C5, C6, C7, C8, C9, C10, C11, C12, C16, C17, C18, C19, C21, C22, C24, C32, C34, C39, C40, C44, C46, C47, C49, C51, C55, C60, C62, C64, C65	33	C0402	±10%	100nF	Samsung Electro-Mechanics	X7R	C1525
2	C13, C14, C54	3	C0402	±5%	15pF	Guangdong Fenghua Advanced Tech	C0G	C1548
3	C15, C20, C23, C33, C41, C48, C63	7	C0603	±10%	10uF	Samsung Electro-Mechanics	X5R	C19702
4	C25	1	C0402	±10%	4.7nF	Guangdong Fenghua Advanced Tech	X7R	C1538
5	C26, C27, C35, C36, C37, C38	6	C0402	±0.25pF	6.8pF	Guangdong Fenghua Advanced Tech	C0G	C1576
6	C28, C29, C30, C31	4	C0402	±5%	27pF	Guangdong Fenghua Advanced Tech	C0G	C1557
7	C42, C43	2	C0402	±10%	3.3nF	Samsung Electro-Mechanics	X7R	C26404
8	C45, C52, C53, C57, C58	5	C0402	±20%	2.2uF	Samsung Electro-Mechanics	X5R	C159814
9	C50, C56, C59	3	C0402	±10%	10nF	Samsung Electro-Mechanics	X7R	C15195
10	C61, C66	2	C0402	±20%	4.7uF	Samsung Electro-Mechanics	X5R	C23733
11	D1, D3, D4	3	LED0603			Hubei KENTO Elec		KT-0603R
12	D2	1	SOD-123			Semtech		1N4148W
13	J1	1	USB4105-GF-A			GCT		USB4105-GF-A
14	J2	1	5-5530843-0			TE Connectivity		5-5530843-0
15	L2	1	C0402			Murata Electronics		BLM15PX330SN1D
16	Q1	1	SOT-23-3			Diodes Incorporated		ZXMP3A13FTA
17	Q2	1	SOT-23-3			Fairchild		BSS138L
18	R1, R2, R3, R5, R6, R7, R32, R33, R34	9	R0402	±1%	10KΩ	Uniroyal Elec		C25744
19	R4, R9, R17	3	R0402	±1%	1KΩ	Uniroyal Elec		C11702
20	R8	1	R0402	±1%	100Ω	Uniroyal Elec		C25076
21	R10	1	ERJB3	1%	3	Panasonic		ERJ-B3BF3R0V
22	R11, R12, R22, R23, R26, R29, R30, R31	8	R0402	±1%	3.3KΩ	Uniroyal Elec		C25890

<b>Project</b>	ESP_CPA
<b>Revision</b>	2.1
<b>Date</b>	16/12/2023
Sheet 3 out of 6	



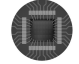
**courk.cc**

This work is licensed under a Creative Commons Attribution-ShareAlike 4.0 International License.

Bill Of Materials

Line #	Designator	Quantity	Footprint	Tolerance	Value	Manufacturer	Material	Part Name
23	R13	1	R0402	±1%	49.9KΩ	Uniroyal Elec		C25897
24	R14	1	R0402	±1%	30.1KΩ	Uniroyal Elec		C29402
25	R15, R16	2	R0402	±1%	5.1KΩ	Uniroyal Elec		C25905
26	R18, R19, R21	3	R0402	±1%	24Ω	Uniroyal Elec		C270625
27	R24, R25, R27, R28	4	R0402	±1%	1.6KΩ	Uniroyal Elec		C4908
28	U1	1	TQFP65P1600X2200X 145-100N			Cypress		CY7C68013A-100AXC
29	U2	1	ST UFQFPN-48 7x7MM			Lattice Semiconductor		ICE5LP1K-SG48ITR
30	U3	1	TSSOP-16			Texas Instruments		THS4532IPW
31	U4	1	QFN50P300X300X80_ HS-17L			Analog Devices		AD8338
32	U5	1	SON50P200X80_HS-9 N			Texas Instruments		DAC53701DSGR
33	U6, U8	2	SON50P300X100_HS- 11N			Texas Instruments		TPS71334DRCR
34	U9	1	TSSOP-28			Analog Devices		AD9235BRUZRL7-40
35	X1	1	CRYSTAL_532			Abracon		FQ5032BR-24.000

<b>Project</b>	ESP_CPA
<b>Revision</b>	2.1
<b>Date</b>	16/12/2023
Sheet 4 out of 6	



**courk.cc**

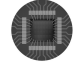
This work is licensed under a Creative Commons Attribution-ShareAlike 4.0 International License.

Layer Stack Legend

Material	Layer	Thickness	Dielectric Material	Type	Gerber
	Top Overlay			Legend	GTO
Surface Material	Top Solder	0.020mm	Solder Resist	Solder Mask	GTS
<b>Copper</b>	<b>Top Layer</b>	<b>0.035mm</b>		<b>Signal</b>	<b>GTL</b>
Prepreg		0.099mm	PP-006	Dielectric	
CF-004	Layer 1	0.015mm		Internal Plane	GP1
		1.265mm	FR-4	Dielectric	
CF-004	Layer 2	0.015mm		Internal Plane	GP2
Prepreg		0.099mm	PP-006	Dielectric	
<b>Copper</b>	<b>Bottom Layer</b>	<b>0.035mm</b>		<b>Signal</b>	<b>GBL</b>
Surface Material	Bottom Solder	0.020mm	Solder Resist	Solder Mask	GBS
	Bottom Overlay			Legend	GBO

Total thickness: 1.605mm

<b>Project</b>	ESP_CPA
<b>Revision</b>	2.1
<b>Date</b>	16/12/2023
Sheet 5 out of 6	



**courk.cc**

CC BY SA This work is licensed under a Creative Commons Attribution-ShareAlike 4.0 International License.

A

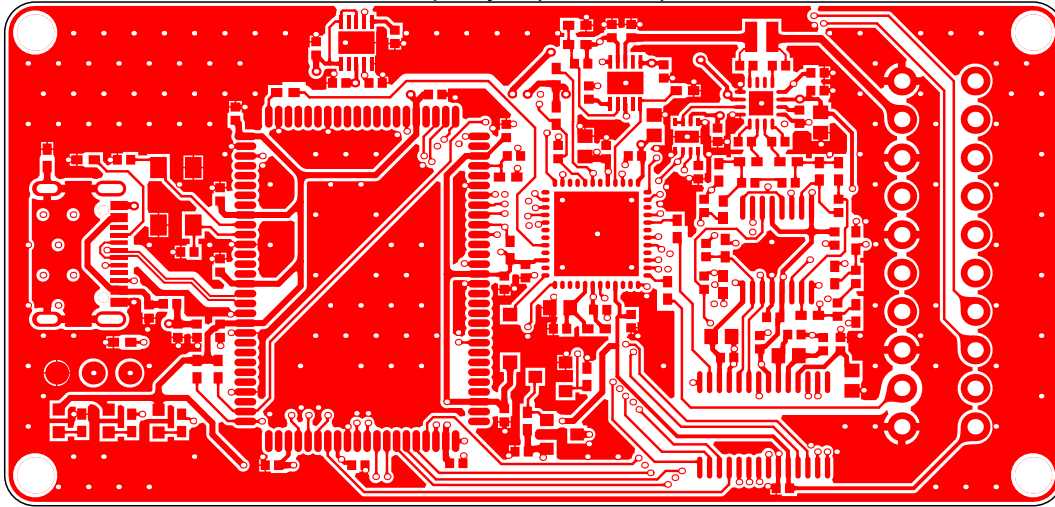
B

C

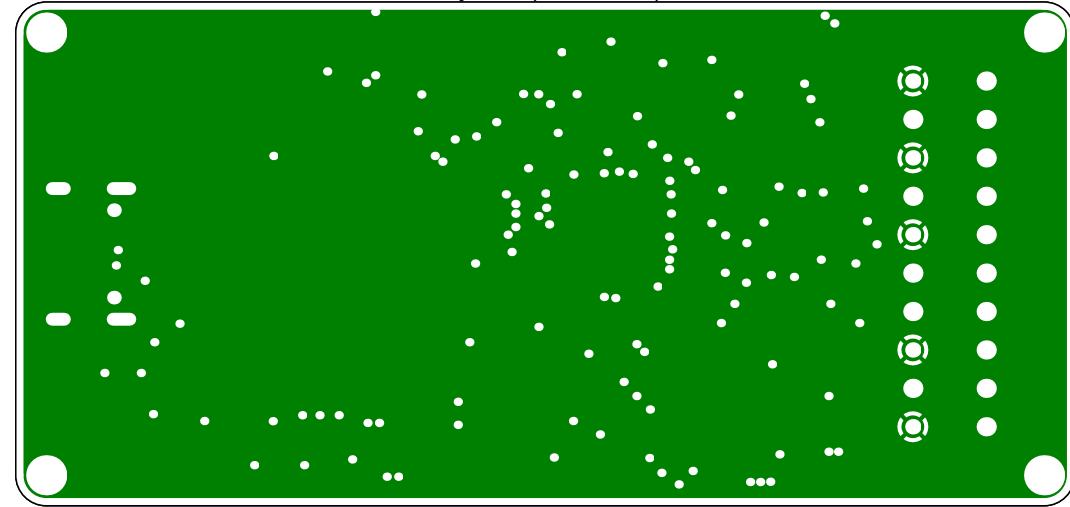
D

E

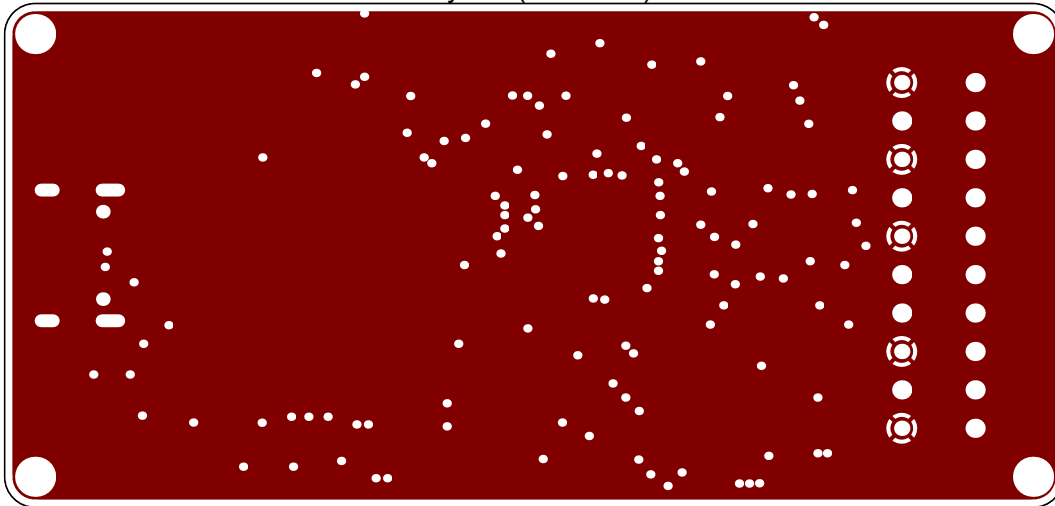
Top Layer (Scale 2:1)



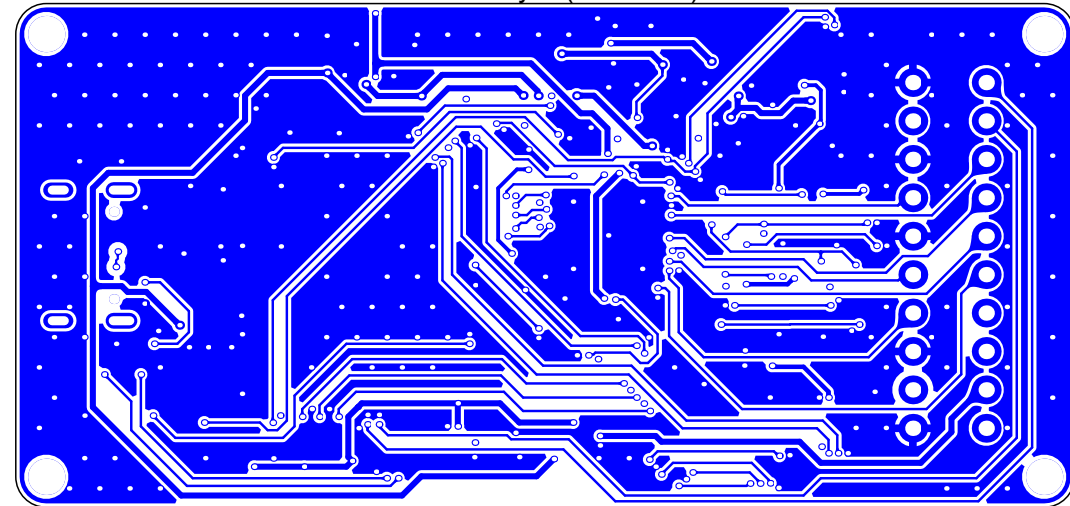
Layer 1 (Scale 2:1)



Layer 2 (Scale 2:1)



Bottom Layer (Scale 2:1)



<b>Project</b>	ESP_CPA
<b>Revision</b>	2.1
<b>Date</b>	16/12/2023

Sheet 6 out of 6



courk.cc

 This work is licensed under a Creative Commons Attribution-ShareAlike 4.0 International License.

A

B

C

D

E