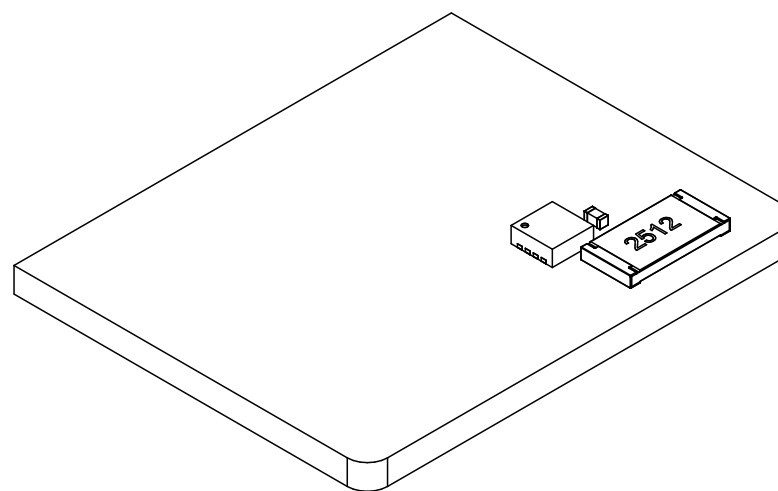
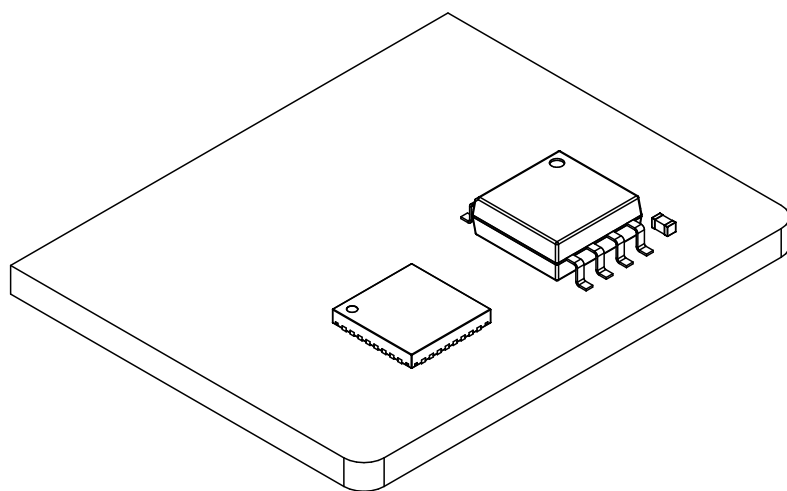


# ESP32C3\_CPA\_Cartridge (2.0)

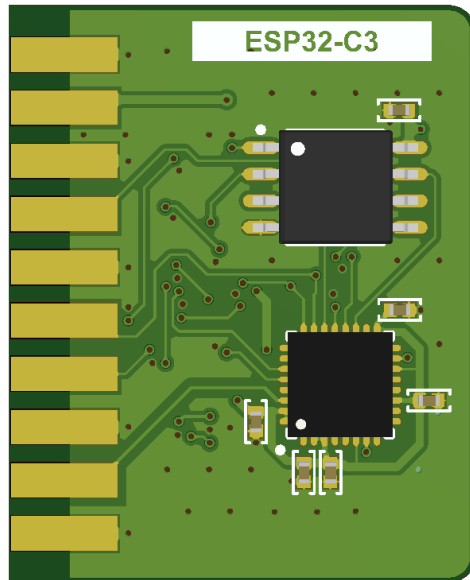
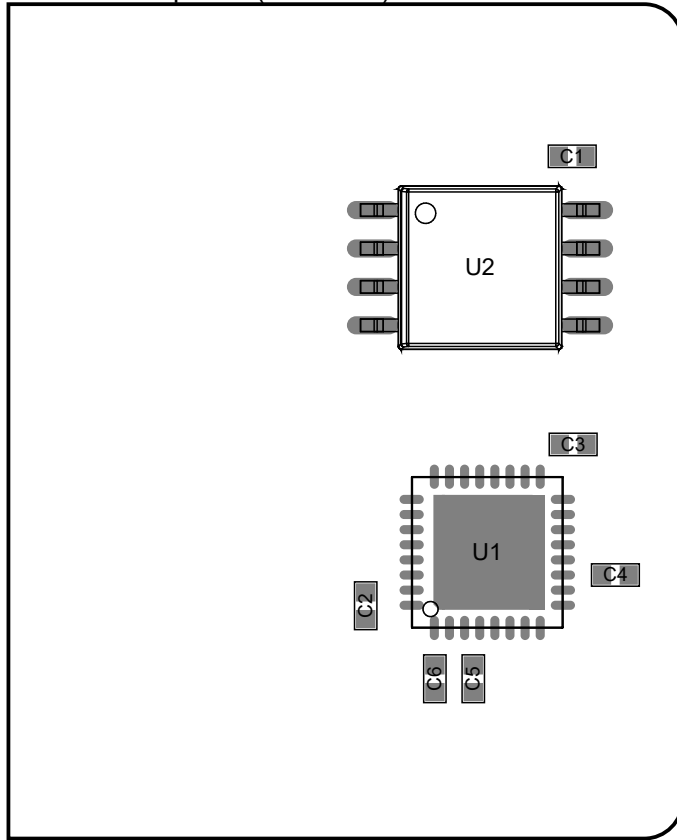


<b>Project</b>	ESP32C3_CP A_Cartridge
<b>Revision</b>	2.0
<b>Date</b>	16/12/2023
Sheet 1 out of 5	

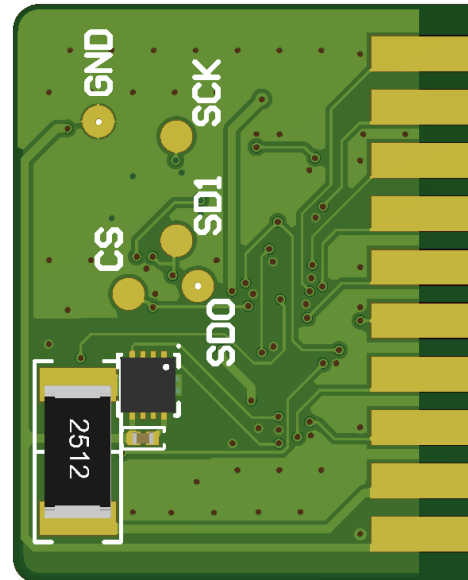
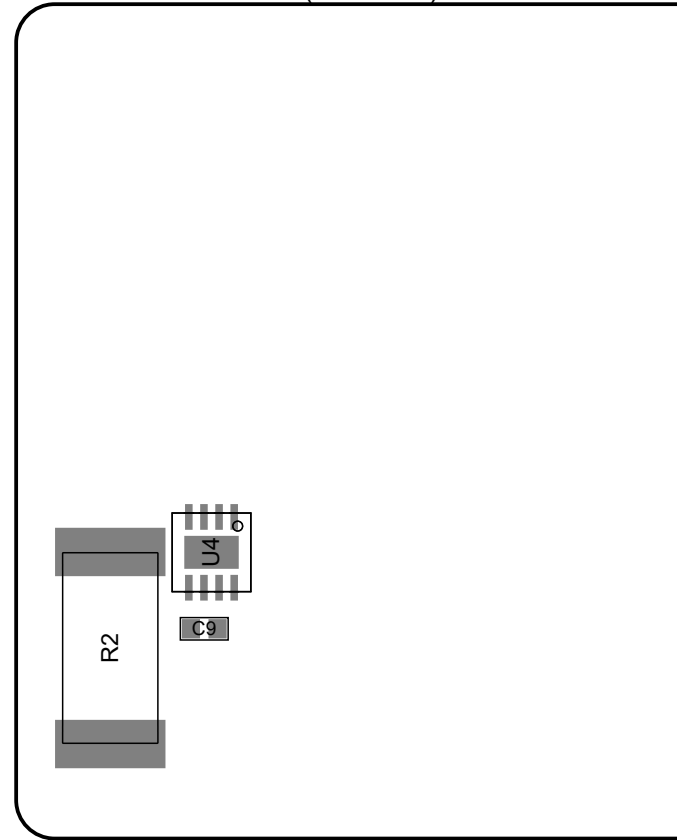


**courk.cc**

View from Top side (Scale 4:1)



View from Bottom side (Scale 4:1)



<b>Project</b>	ESP32C3_CP A_Cartridge
<b>Revision</b>	2.0
<b>Date</b>	16/12/2023

Sheet 2 out of 5



**courk.cc**

Bill Of Materials

Line #	Designator	Quantity	Footprint	Tolerance	Value	Manufacturer	Material	Part Name
1	C1, C9	2	C0402	±10%	100nF	Samsung Electro-Mechanics	X7R	C1525
2	R2	1	R2512	5%	30	FOJAN		FRC2512J300 TS
3	U1	1	QFN-32			Espressif		ESP32-C3
4	U2	1	SOIC127P790X216-8N			Winbond		W25Q32JVSSIQS
5	U4	1	SON50P250X100_HS-9N			Sensirion		STS35-DIS

<b>Project</b>	ESP32C3_CP A_Cartridge
<b>Revision</b>	2.0
<b>Date</b>	16/12/2023
Sheet 3 out of 5	



**courk.cc**

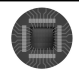
This work is licensed under a Creative Commons Attribution-ShareAlike 4.0 International License.

Layer Stack Legend

Material	Layer	Thickness	Dielectric Material	Type	Gerber
	Top Overlay			Legend	GTO
Surface Material	Top Solder	0.020mm	Solder Resist	Solder Mask	GTS
<b>Copper</b>	<b>Top Layer</b>	<b>0.035mm</b>		<b>Signal</b>	<b>GTL</b>
Prepreg		0.099mm	PP-006	Dielectric	
CF-004	Layer 1	0.015mm		Internal Plane	GP1
		1.265mm	FR-4	Dielectric	
CF-004	Layer 2	0.015mm		Internal Plane	GP2
Prepreg		0.099mm	PP-006	Dielectric	
<b>Copper</b>	<b>Bottom Layer</b>	<b>0.035mm</b>		<b>Signal</b>	<b>GBL</b>
Surface Material	Bottom Solder	0.020mm	Solder Resist	Solder Mask	GBS
	Bottom Overlay			Legend	GBO

Total thickness: 1.604mm

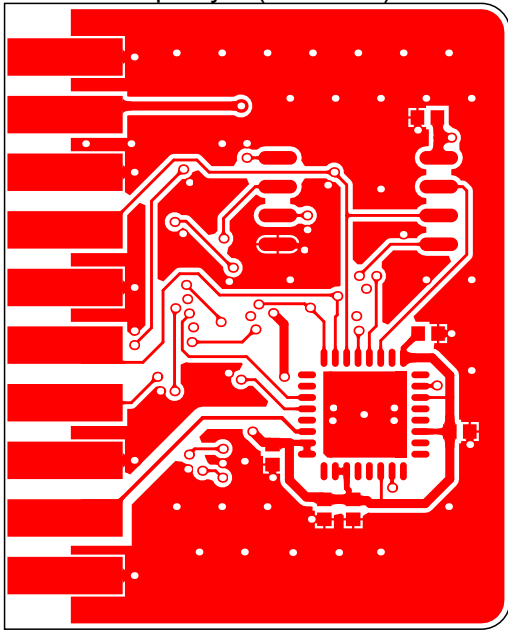
<b>Project</b>	ESP32C3_CP A_Cartridge
<b>Revision</b>	2.0
<b>Date</b>	16/12/2023
Sheet 4 out of 5	



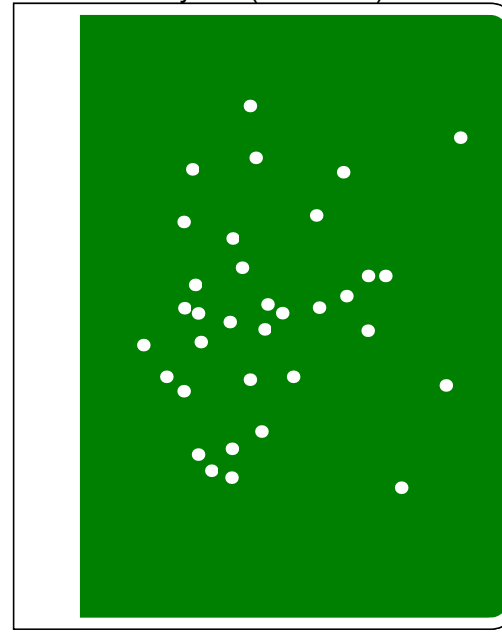
**courk.cc**

CC BY SA This work is licensed under a Creative Commons Attribution-ShareAlike 4.0 International License.

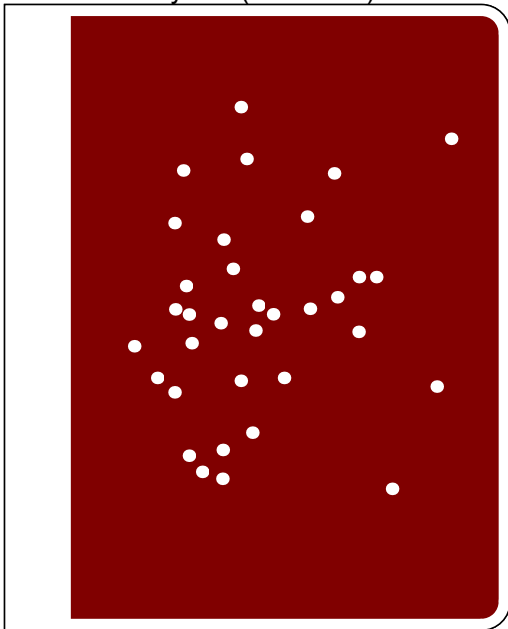
Top Layer (Scale 3:1)



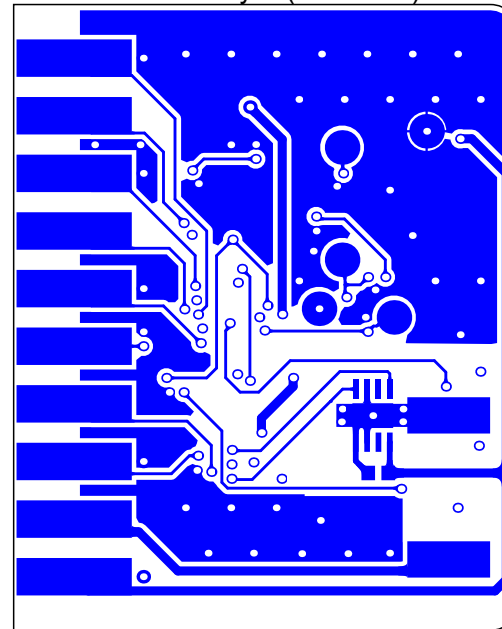
Layer 1 (Scale 3:1)



Layer 2 (Scale 3:1)



Bottom Layer (Scale 3:1)



<b>Project</b>	ESP32C3_CP A_Cartridge
<b>Revision</b>	2.0
<b>Date</b>	16/12/2023
Sheet 5 out of 5	